



# FOCUS ON MILE END

**EXCLUSIVE NEWS AND UPDATES FOR MILE END RESIDENTS**

**Winter 2017**

## Your Liberal Democrat Team

### NEW YEAR 'KEEP SAFE'

### MESSAGE FROM YOUR LIB DEM

### MILE END TEAM

***There has been a huge increase in the number of people killed and injured on the roads in Essex last year.***

Drivers are being urged to take care and drive responsibly following these rises.

Sixty three people were killed and 955 seriously injured, a significant rise. 51,000 drivers in Essex were put on driver education courses in 2016!

Motorcyclists and younger drivers are again the most vulnerable road users.

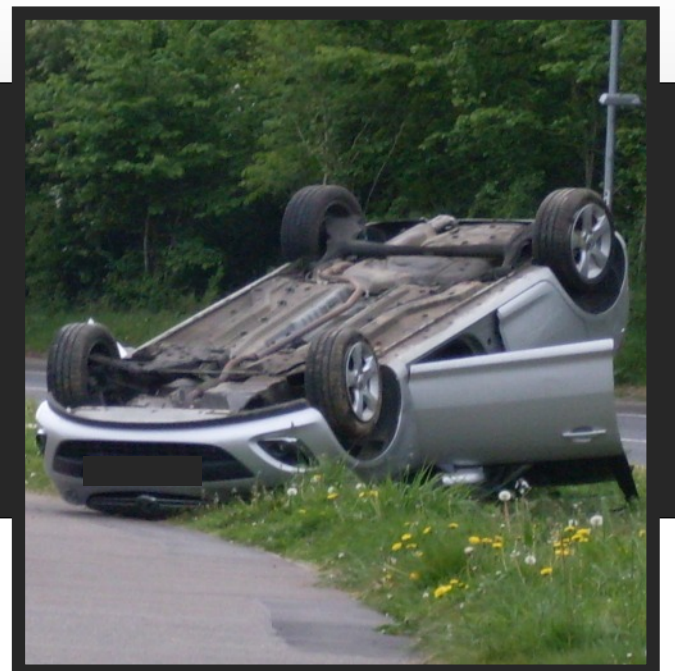
Please be aware that Essex Police are taking steps to tackle poor driving with regular operations targeting speeding, use of mobile phones whilst driving and not wearing a seatbelt.

*Please drive safely*

## EXCLUSIVE... Latest Mile End News

### IN THIS EDITION OF MILE END FOCUS:

- Parking updates
- Reporting crime.
- Mile End Road trees.
- Public Space Protection Order- PSPO
- Fords Lane Park
- Concert
- Mill Road
- Keeping Mile End clean and green.
- Equity Building
- Waste changes
- Road Safety



## KEEPING MILE END CLEAN AND GREEN

**F**ollowing many reports during the last few months, councillors have ensured the boroughs team of operatives, The Landscape Company, have cut and chopped back all hedges, trees and grass as required. If you know of any area requiring such work please do report it as the team do a great job in maintaining Mile End as a clean and green ward.



● Your Lib Dem Mile End Team in action

With **litter** another issue please we also remind residents it is an offence to drop litter. A small minority of residents, or those passing through the town, have no conscious and appear to lack the civility to

respect everyone else's wish to live in a clean ward/town and put their litter in a bin. It is anti-social behaviour and is enforceable with fixed penalty notices of £75, rising via the courts to £2,500.

### REPORTING CRIME

**Please note that for reporting non-emergency crimes call 101 (this does not replace the emergency number 999)**

You can now also report non-emergency crimes on 01245 491491. For those with deaf or hearing/speech problems use the minicom number on 01245 452828 or report on line at [www.essex.police.uk/reportonline](http://www.essex.police.uk/reportonline). The whole of Mile End is now covered by Neighbourhood Watch Schemes and if you would like to sign up and receive regular crime updates and support your community then please let us know.

### PUBLIC SPACE PROTECTION ORDER - PSPO

Please note that a borough wide PSPO an offence for a person within the (a power under the Anti-Social Behaviour, Crime and policing act of 2014) has been served that makes it an offence for a person within the borough of Colchester to NOT pick up dog fouling. A fine of £50 will be enforced.

### PROJECT INVESTMENT IN MILE END

**Thank you to the 325 people who voted online for their favourite 2017 project from our local Mile End funding pot.**

The top 3 projects we have awarded funding to based on your votes are: £1,000 to local Mile End Primary schools for the purchasing of sports equipment Dominic has also awarded £1,000 towards funding for more cycle racks in Mile End. £2,500 to the homeless shelter which does help some Mile End people £1,500 for tree planting in Mile End

**BEST OF HEALTH  
FOR COLCHESTER**

### NHS CONSULTATION

Please respond to the NHS on possible proposed changes to the Walk-in-Centre at: <https://uea.onlinesurveys.ac.uk/proposed-changes-to-urgent-care-out-of-hospital-services-4>



**Cty Cllr Anne Turrell**  
Tel: 752418  
[AnneTurrell@msn.com](mailto:AnneTurrell@msn.com)



**Cllr Dominic Graham**  
Tel: 07717 583491  
[domgraham@hotmail.co.uk](mailto:domgraham@hotmail.co.uk)



**Cllr Phil Coleman**  
Tel: 07808 530587  
[teachercoleman@hotmail.com](mailto:teachercoleman@hotmail.com)



**Cllr Martin Goss**  
Tel: 07912 396335  
[gossmartin@hotmail.com](mailto:gossmartin@hotmail.com)





## MILL ROAD ACTION

Following months of reporting by all of your Mile End councillors there has at last been some action taken by Essex County Council Highways on Mill Road. The traffic island has been fully repaired and brought up to standard and the section going East from the NAR is due to be resurfaced.

The section from the NAR travelling West passed Myland School, has been report on numerous occasions and is due for inspection shortly. With reduced budgets at ECC impacting on Colchester roads, it is clear road surfaces, potholes and kerbs are going to take longer to be completed.

## FREE PARKING AT COLCHESTER GENERAL HOSPITAL

### • Blue Badge Holders

Patients and visitors with Blue Badges are eligible to park for free in the parking bays marked for wheelchair access free of charge, which are available close to the hospital and in the visitor car park.

Those patients and visitors using the disabled bays within the main visitor car park are provided with a free exit ticket on production of a Blue Badge.

### • Chemotherapy and Radiotherapy Patients

Parking is free for patients attending for chemotherapy and radiotherapy treatment, who can obtain an exit ticket from the department and a record is kept of the tickets issued.

### • Bicycles and Motorbikes

Bicycles and motorbikes are encouraged to use the cycle facilities provided but can park free anywhere on the site without a permit.

### • Waiting Times

The first twenty minutes of any parking time is also currently free for all visitors and patients. When the proposed travel, access and parking changes are introduced in June 2017, this free period will be increased to thirty minutes.

### PARK & RIDE TO CALL AT THE HOSPITAL

We are very pleased to announce that from 9th January the Park & Ride bus will stop on the Northern Approach Road allowing residents

to be dropped off and picked up for the hospital. A footpath already exists which can be used to walk to the hospital.

We have been calling for a stop to be installed at the hospital so we are pleased this will further increase access to the hospital.



## FORD'S LANE PARK

The refurbishment of the playground equipment at the Fords Lane Park is now complete with new and different pieces installed for young children to play on.

The cost was met from Section 106 funding from developers as part of the agreement to build Chesterwell.

## Wheelie Bins Are Coming to Mile End Changes to waste and recycling collections for 2017

The council's long awaited changes to waste and recycling collections were given the go-ahead at the last cabinet meeting of 2016, a week before Christmas. The proposals were approved unanimously and are expected to be introduced in the summer.

The key changes for Mile End residents are as follows:

- Wheelie bins for black bag/residual waste, collected every two weeks
- Wheelie bins for garden waste, collected every two weeks
- Black bags will no longer be delivered for free
- An extra green box to separate glass and cans (this is optional)

- Food waste collections will remain the same (ie. collected every week)
- Recycling of paper and plastics to remain the same (ie. fortnightly, using clear sacks)

Council staff are now assessing Mile End (and other areas) to confirm where wheelie bins can and can't be introduced. That work is expected to be complete in the Spring.

If your area is unsuitable for a wheelie bin, for example if you have nowhere to store a wheelie bin, or you have too many steps between your front door and the kerb, then wheelie bins will not be introduced into that area. If wheelie bins are NOT introduced into your street then you will be restricted to three black bags per fortnight.

## LOCAL NEWS



### • NAR - Latest news

### NAR AND NORTH STATION TRAFFIC LIGHT ISSUES

Residents have raised various issues with us about the traffic lights on the Northern Approach Road in particular the issues with turning right into Mill Road where Myland School is when travelling along the NAR from the Great Horksley direction. Essex County Council have checked the lights and confirmed "they are functioning as designed."

The issue is the lights are on a secondary phase meaning it can take two full cycles of the all lights changing in order to allow cars through. This can take between 5 and 8 minutes. We have submitted a request to the Highways Panel to request the design is looked at and amended.

We have also had some tweaks carried out to the lights at North Station as again these appeared to be out of calibration.

### NAR DEVELOPMENT PARKING REVIEW

The North Essex Parking Partnership (NEPP) have reported back that in principle they agree the Northern Approach development requires a full parking review. However, at the moment there is no funding for the project.

We have submitted a funding request to the Highways Panel to see if they will provide any funds towards the project. We will also see what other funding might be available for a full review. We will keep you updated on any progress.

### MILE END ROAD TREES

Following the works to create the shared cycle path on Mile End Road, where several trees were removed we are happy to report that 10 new trees have been replanted along the Eastern side of the road, more than were taken down. We are still speaking to ECC Highways over more being added.

### EQUITY BUILDING

Following plans submitted to redevelop the Equity Insurance Building next to North Station all Mile End councillors have met with the developer, Crown House Homes, to discuss issues that both councillors and residents had flagged up.

Following discussions all issues, including parking, deliveries, waste collection etc have been resolved and we are very confident the old building will be enhanced and used for 63 quality apartments.

### DEVELOPMENT UPDATES

#### NORTHFIELDS

We are continuing to push Linden Homes to get Northfields completed - some visible action has started at last. Thanks to those residents who attended the Trinity meeting on Jan 23rd.

#### NEW BRAISWICK PARK

There are some further remedial works due but adoption of the entire development is now getting closer.

#### ROSEWOOD

We are in regular contact with Crest Nicholson about Rosewood and ensuring all issues are being dealt with, including those which involve the management company.

#### CHESTERWELL

Chesterwell is now moving forwards and we liaise regularly with Mersea Homes and Countryside.

#### SEVERALLS PHASE 2

Severalls Phase 2 is now also moving forwards and we keep regular contact with the consortium as any issues arise.

### PARKING UPDATES

Following a full consultation of all residents in both Tall Trees and Greenacres it has shown that there is insufficient support for any additional parking restrictions. In order for any changes to be submitted there has to be 80% support and this figure was not reached.

**\*\*\*The residents in Boxted Road voted 100% to have parking restrictions implemented in their section of Boxted Road and these proposals have been agreed with action to follow shortly.**

### HAVE YOUR SAY

#### - DUELLING OF A120

Plans to duel the A120 from Braintree to the A12 near Kelvedon are now on display with 9 proposed routes put forward by Highways England. People will be able to see the proposals and have their say at 2 meetings- Tuesday 7th February at Marks Tey Village Hall and on Friday 10th February at Charter Hall in Colchester.

### HIGHWAY UPDATES

We should hear back from Essex County Council shortly regarding the 20 MPH zone outside Myland School. We should have a formal design from Essex County Council by the end of February.

The traffic calming design for Mill Road is still being worked on by Essex County Council. We hope to see a design from them shortly. Essex County Council will be carrying out a review of all crossings along the Northern Approach Road as we have requested a new crossing at the bottom of Wallace Road so parents can cross more easily with their children. Bergholt Road we are still also pushing for re-surfacing.

Cllr Dominic Graham, Cabinet Member for Waste & Sustainability introduced the new proposals. He said. "At present, Colchester recycles around 45% of its waste, which is approximately the average for the UK. However the best performing areas in the country recycle more than 65%. There is no doubt about it; we had to change our methods in order to improve. These proposals will deliver a significant improvement and will have a very positive environmental impact".

These changes have been introduced to encourage residents to reduce the amount of waste going into black bags, and to increase the amount of recycling.

We recognise some residents may struggle with the new system and may need some assistance. An Exemptions Policy has been developed and additional resources have been put into place to ensure all residents can be helped. If you are concerned about how the changes will affect you, or you wish to find out more about Exemptions and Assistance, then please do not hesitate to contact us.

## CONCERT

10th JUNE 2017

*Olly Murs*

AFTER SIR ELTON JOHN AND LIONEL RITCHIE  
NEXT UP AT THE WESTON HOMES COMMUNITY STADIUM  
ON SATURDAY JUNE 10TH  
2017 IS LOCAL SINGING STAR OLLY MURS. OLLY WHO IS FROM WITHAM IS PLAYING AT VENUES ACROSS THE COUNTRY AND SEE'S THIS AS HIS 'HOMECOMING GIG'.

CONTACT US: By Post FREEPOST COLCHESTER LIBERAL DEMOCRATS

Mileendcolchester @mileendnews